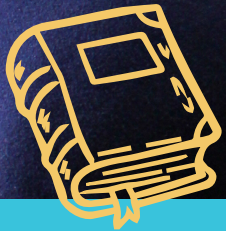




shift
_ed



Tutors + HELPS program = A LIFELONG LOVE OF READING FOR GUILFORD COUNTY STUDENTS



As a shift_ed HELPS tutor, you will work one-on-one with local elementary school students as they discover the wonderful world of reading! HELPS, which stands for Helping Early Literacy with Practice Strategies, is a research-backed program that provides easy-to-use strategies for improving reading comprehension. All tutors are given comprehensive training before working with students, as well as ongoing coaching and support throughout the year.

shift-ed.org



IN
PARTNERSHIP
WITH

Helps
Education
Fund™ 



HELPS VOLUNTEER JOB DESCRIPTION

SCHEDULE & LOCATION

- Up to 15 hours per week
- Tutors will be matched with local Guilford County Title I elementary schools to provide structured tutoring using the HELPS model in person

POSITION DESCRIPTION

shift_ed is aligned with the Guilford County school district's literacy goal focused on increasing the number of students reading proficiently from 53.4 percent to 63 percent. To help achieve this goal, we are implementing the evidence-based HELPS literacy model in our 51 Title I elementary schools across Guilford County. Tutors will work one on one with students at their school to achieve best program results.

The Helping Early Literacy with Practice Strategies (HELPS) Program integrates easy-to-use instructional strategies that are specifically designed to improve students' reading fluency without removing students from the classroom for an extended period of time.

ACTIVITIES & OUTCOMES

Activities & Outcomes

- Implement 10-15 minute HELPS sessions 2-3 days a week
- Use evidence-based strategies to improve students' reading comprehension into sessions, which will include:
 - Structured, repeated readings of ability-appropriate text
 - Having students listen to a more skilled reader read aloud, such as an adult (i.e., model reading)
 - Systematic error-correction procedures
 - Verbal cues for students to read with fluency
 - Verbal cues for students to read for comprehension
 - Goal-setting (i.e., practicing text until a pre-determined performance criterion is met)
 - Performance feedback combined with graphical displays of student progress
 - Use of systematic praise and a structured reward system for student reading behaviors and successes

Benefits

- Obtain practical work and professional experience
- Acquire skills and experiences related to career goals or community involvement

MINIMUM QUALIFICATIONS AND EXPECTATIONS

- Proficiency in Microsoft Office Suite including Word, Excel, Power Point, etc.
- Ability to communicate effectively with kids, young people and adults from diverse backgrounds
- Must have transportation to and from the school site. Efforts will be made to match tutors with a school easily accessible to them. Travel time is paid.
- Must maintain and uphold professional standards of both behavior and dress
- Ability to resolve problems creatively, efficiently, effectively and independently
- Ability to satisfactorily complete required background screenings: criminal and driving
- Ability to work scheduled hours or communicate absence in a timely manner

ABOUT SHIFT_ED

The mission of shift_ed is to boldly accelerate student potential. With programs impacting elementary school through postsecondary education, shift_ed partners with Guilford County Schools to provide thousands of hours of tutoring, aptitude assessments, college prep and financial aid workshops and career counseling to students. shift_ed is dedicated to providing diverse educational and workforce pathways to GCS students.

QUESTIONS? CONTACT US!

Amanda Mehl | Elementary Program Coordinator

amandamehl@shift-ed.org

(336) 901-2562



[shift-ed.org](https://www.shift-ed.org)